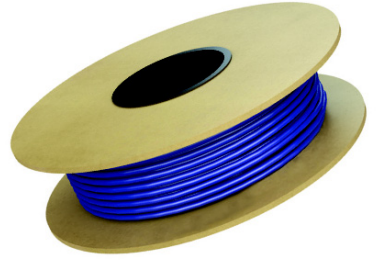


PRODUCT CODE

NADCM-C-xxx-xxx // NADCM-C-voltage-wattage



PRODUCT DESCRIPTION

The Warmup DCM-PRO Cable is a custom designed cable compatible with all uncoupling membranes. It can be installed at 2, 3 or 4 pgs. The cable itself allows primary heating thanks to the twin-core ETFE cable, for highest output. It is guaranteed 30-years. Even better results when used with Warmup 4iE Smart WiFi or 3iE Energy-Monitoring thermostats.

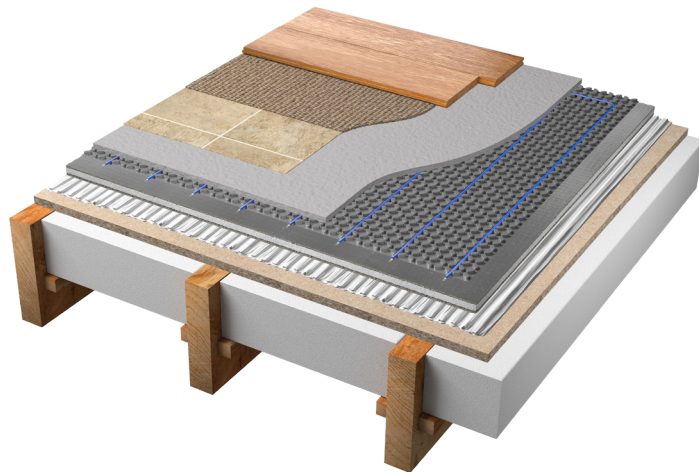
SPECIFICATIONS

Operating voltage	120 or 240V
Thickness	3/16" (4.5mm - +/- 0.2mm)
Output	Approx. 4W/lin foot
Construction	Multi-stranded, dual wire
Inner insulation	ETFE
Outer jacket	PVC
Earth braid	85% min copper
Cold lead	10ft (3m) long, 2 core braided



APPLICATION

The Warmup DCM-PRO Cable is compatible with Schluter® DITRA-HEAT, Prodeso Heat Mat, Flextherm FLEXSnap, Heatmatrix and Warmup DCM-PRO Mat.



PRODUCT LISTING AND CABLE SPACING

	PRODUCT CODE	Cable length (ft)	Amps	Uncoupling Systems			Loose laid cable w/ spacers		
				2 pegs	3 pegs	4 pegs	2"	3"	4"
120 Volt	NADCM-C-120-65	16.7	0.5	3	5	7	3	4	6
	NADCM-C-120-130	33.1	1.1	7	10	13	6	8	11
	NADCM-C-120-195	49.9	1.6	10	15	20	8	12	17
	NADCM-C-120-260	66.3	2.2	13	20	27	11	17	22
	NADCM-C-120-325	83.0	2.7	17	25	33	14	21	28
	NADCM-C-120-390	99.4	3.3	20	30	40	17	25	33
	NADCM-C-120-525	132.9	4.4	27	40	53	22	33	44
	NADCM-C-120-655	166.0	5.5	33	50	67	28	42	55
	NADCM-C-120-785	199.1	6.5	40	60	80	33	50	66
	NADCM-C-120-920	232.3	7.7	47	70	93	39	58	77
	NADCM-C-120-1050	265.4	8.8	53	80	107	44	66	88
	NADCM-C-120-1180	298.6	9.8	60	90	120	50	75	100
	NADCM-C-120-1315	331.7	11.0	67	100	133	55	83	111
	NADCM-C-120-1445	364.8	12.0	73	110	147	61	91	122
	NADCM-C-120-1575	398.0	13.1	80	120	160	66	99	133
240 Volt	NADCM-C-240-325	83.0	1.4	17	25	33	14	21	28
	NADCM-C-240-390	99.4	1.6	20	30	40	17	25	33
	NADCM-C-240-525	132.9	2.2	27	40	53	22	33	44
	NADCM-C-240-655	166.0	2.8	33	50	67	28	42	55
	NADCM-C-240-785	199.1	3.3	40	60	80	33	50	66
	NADCM-C-240-920	232.3	3.9	47	70	93	39	58	77
	NADCM-C-240-1050	265.4	4.5	53	80	107	44	66	88
	NADCM-C-240-1180	298.6	5.0	60	90	120	50	75	100
	NADCM-C-240-1310	331.7	5.6	67	100	133	55	83	111
	NADCM-C-240-1640	414.7	7.0	83	125	167	69	104	138
	NADCM-C-240-1970	497.7	8.4	100	150	200	83	124	166
	NADCM-C-240-2300	580.7	9.8	117	175	233	97	145	194
	NADCM-C-240-2630	663.4	11.2	133	200	266	111	166	221
	NADCM-C-240-2955	746.4	12.6	150	225	300	124	187	249
	NADCM-C-240-3240	829.4	13.5	167	250	333	138	207	276

Installation Membrane

Code	Description	Dimensions
NADCM-PRO-S	Small membrane to cover 54sqft	3'3" x 16'4"
NADCM-PRO-L	Large membrane to cover 161 sqft	3'3" x 49'2"

Cable plastic fixing strips

Code	Description
PLG-DCM-12	Plastic fixing strips - 40 per box.

WARRANTY & MAINTENANCE

When installed according to the installation manual, the DCM-PRO Cable is covered with Warmup's 30-year manufacturer warranty.

TECHNICAL SUPPORT

Warmup is available 24/7/365 at (888) 927-6333.

For quotes, layouts and specific technical information, contact us at:

Warmup USA

52 Federal Rd #1F, Danbury, CT, 06810

(888) 927-6333

us@warmup.com

Warmup CANADA

374 Wellington St W, Toronto, ON, M5V 1E3

(888) 592-7687

ca@warmup.com

RELATED PRODUCTS

- Relay 40 - see WSC-0405
- 3iE Energy-Monitoring thermostat - see WSC-0722
- 4iE Smart WiFi Thermostat - see WSC-0926
- Uncoupling membrane for DCM-PRO Cable - see WSC-1025